



Economic Overview

Lincoln and Otero



Demographic Profile.....	3
Employment Trends	5
Unemployment Rate	5
Wage Trends	6
Cost of Living Index	7
Industry Snapshot	8
Occupation Snapshot	10
Industry Clusters	12
Education Levels.....	13
Gross Domestic Product	14
Lincoln and Otero Regional Map.....	16
Region Definition.....	17
FAQ.....	18

Demographic Profile

The population in the Lincoln and Otero was 88,462 per American Community Survey data for 2019-2023.

The region has a civilian labor force of 35,747 with a participation rate of 52.6%. Of individuals 25 to 64 in the Lincoln and Otero, 21.2% have a bachelor's degree or higher which compares with 36.5% in the nation.

The median household income in the Lincoln and Otero is \$52,418 and the median house value is \$169,605.

Summary ¹						
	Percent			Value		
	Lincoln and Otero	EAWDB	New Mexico	Lincoln and Otero	EAWDB	New Mexico
Demographics						
Population (ACS)	—	—	—	88,462	373,472	2,114,768
Male	51.6%	51.4%	49.7%	45,660	191,800	1,050,368
Female	48.4%	48.6%	50.3%	42,802	181,672	1,064,400
Median Age ²	—	—	—	40.0	36.1	39.2
Under 18 Years	21.0%	25.2%	22.1%	18,533	94,183	466,617
18 to 24 Years	10.0%	10.1%	9.3%	8,812	37,637	197,152
25 to 34 Years	13.9%	14.0%	13.2%	12,264	52,227	279,227
35 to 44 Years	11.6%	12.7%	12.7%	10,283	47,342	267,554
45 to 54 Years	10.2%	10.4%	11.2%	9,018	38,927	236,766
55 to 64 Years	13.2%	11.8%	12.8%	11,651	44,067	270,296
65 to 74 Years	11.9%	9.4%	11.3%	10,567	35,182	239,187
75 Years and Over	8.3%	6.4%	7.5%	7,334	23,907	157,969
Race: White	63.0%	60.9%	53.6%	55,766	227,309	1,133,871
Race: Black or African American	3.0%	2.8%	2.1%	2,656	10,627	44,709
Race: American Indian and Alaska Native	5.7%	2.4%	9.5%	5,049	8,798	201,346
Race: Asian	1.3%	1.0%	1.7%	1,112	3,850	36,065
Race: Native Hawaiian and Other Pacific Islander	0.1%	0.1%	0.1%	79	267	2,049
Race: Some Other Race	8.4%	11.8%	12.0%	7,414	43,893	253,794
Race: Two or More Races	18.5%	21.1%	20.9%	16,386	78,728	442,934
Hispanic or Latino (of any race)	37.6%	50.1%	48.2%	33,274	187,036	1,018,321
Population Growth						
Population (Pop Estimates) ⁴	—	—	—	88,864	369,857	2,114,371
Population Annual Average Growth ⁴	0.3%	0.1%	0.1%	253	214	2,154
People per Square Mile ⁴	—	—	—	7.8	8.4	17.4
Economic						
Labor Force Participation Rate and Size (civilian population 16 years and over)	52.6%	57.6%	57.4%	35,747	162,256	970,453
Prime-Age Labor Force Participation Rate and Size (civilian population 25-54)	71.5%	73.9%	77.6%	20,948	98,787	600,912
Work from Home	7.6%	5.3%	11.0%	2,746	8,273	100,080
Armed Forces Labor Force	5.9%	2.9%	0.9%	4,271	8,416	14,637
Veterans, Age 18-64	9.6%	5.9%	5.2%	4,567	12,510	64,775
Veterans Labor Force Participation Rate and Size, Age 18-64	71.9%	75.2%	73.7%	3,283	9,410	47,755
Median Household Income ²	—	—	—	\$52,418	\$59,760	\$62,125
Per Capita Income	—	—	—	\$29,992	\$31,003	\$34,823
Mean Commute Time (minutes)	—	—	—	22.4	20.4	23.2
Commute via Public Transportation	0.3%	0.2%	0.7%	91	287	6,182
Educational Attainment, Age 25-64						
No High School Diploma	11.6%	16.7%	11.7%	5,000	30,472	123,551
High School Graduate	29.0%	29.2%	26.1%	12,515	53,268	275,245

Summary¹

	Percent			Value		
	Lincoln and Otero	EAWDB	New Mexico	Lincoln and Otero	EAWDB	New Mexico
Some College, No Degree	27.0%	25.2%	22.9%	11,659	46,023	241,079
Associate's Degree	11.3%	10.0%	10.1%	4,900	18,229	106,395
Bachelor's Degree	14.6%	11.9%	16.8%	6,324	21,784	176,932
Postgraduate Degree	6.5%	7.0%	12.4%	2,818	12,787	130,641
Housing						
Total Housing Units	—	—	—	50,168	172,925	949,524
Median House Value (of owner-occupied units) ^{2,5}	—	—	—	\$169,605	\$164,756	\$232,200
Homeowner Vacancy	2.4%	1.6%	1.1%	575	1,609	6,424
Rental Vacancy	11.3%	8.3%	6.1%	1,349	4,026	16,660
Renter-Occupied Housing Units (% of Occupied Units)	30.9%	31.2%	30.7%	10,412	43,285	252,957
Owner-Occupied Housing Units (% of Occupied Units)	69.1%	68.8%	69.3%	23,249	95,542	572,064
Occupied Housing Units with No Vehicle Available (% of Occupied Units)	4.9%	5.1%	5.7%	1,639	7,133	47,041
Social						
Poverty Level (of all people)	19.0%	19.0%	18.1%	16,108	68,373	375,381
Households Receiving Food Stamps/SNAP	18.9%	19.4%	18.7%	6,374	26,936	153,928
Enrolled in Grade 12 (% of total population)	1.6%	1.4%	1.4%	1,449	5,178	28,864
Disconnected Youth ³	7.6%	3.5%	3.7%	328	735	4,261
Children in Single Parent Families (% of all children)	40.2%	40.7%	44.5%	6,932	35,599	194,011
Uninsured	9.6%	10.4%	9.5%	7,838	37,089	196,921
With a Disability, Age 18-64	19.0%	16.4%	14.3%	8,681	33,746	174,511
With a Disability, Age 18-64, Labor Force Participation Rate and Size	48.8%	45.1%	43.8%	4,238	15,208	76,369
Foreign Born	9.2%	10.1%	9.2%	8,131	37,859	195,484
Speak English Less Than Very Well (population 5 yrs and over)	8.2%	8.9%	8.7%	6,852	31,017	173,410

Source: [JobsEQ®](#)

1. American Community Survey 2019-2023, unless noted otherwise

2. Median values for certain aggregate regions (such as MSAs) may be estimated as the weighted averages of the median values from the composing counties.

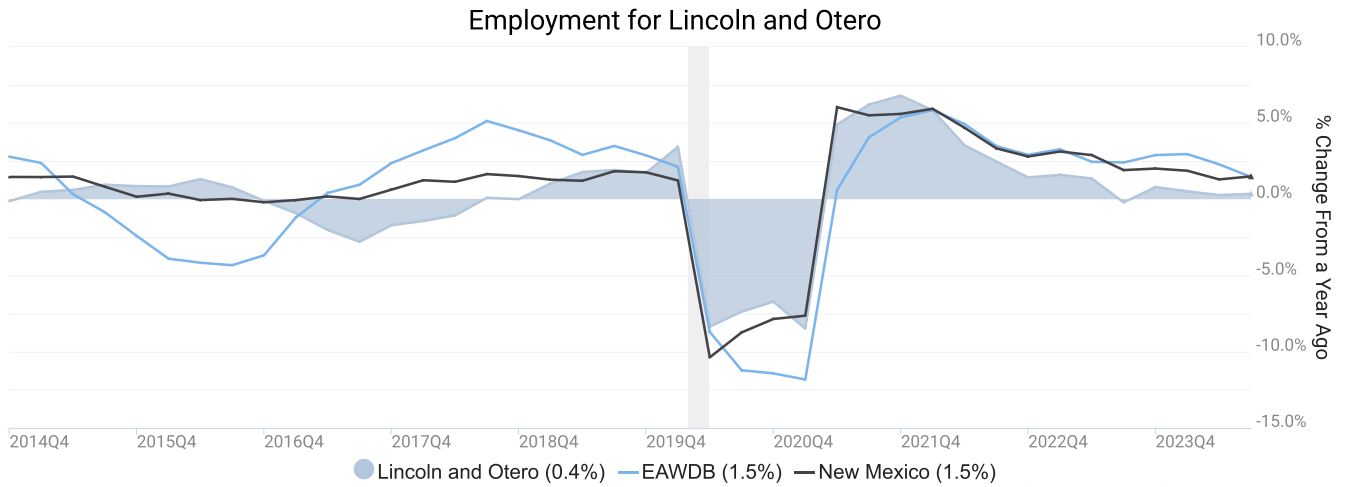
3. Disconnected Youth are 16-19 year olds who are (1) not in school, (2) not high school graduates, and (3) either unemployed or not in the labor force.

4. Census Population Estimate for 2023, annual average growth rate since 2013.

5. The Census's method for calculating median house values changed with the 2022 data set, so pre-2022 values are not directly comparable with later data.

Employment Trends

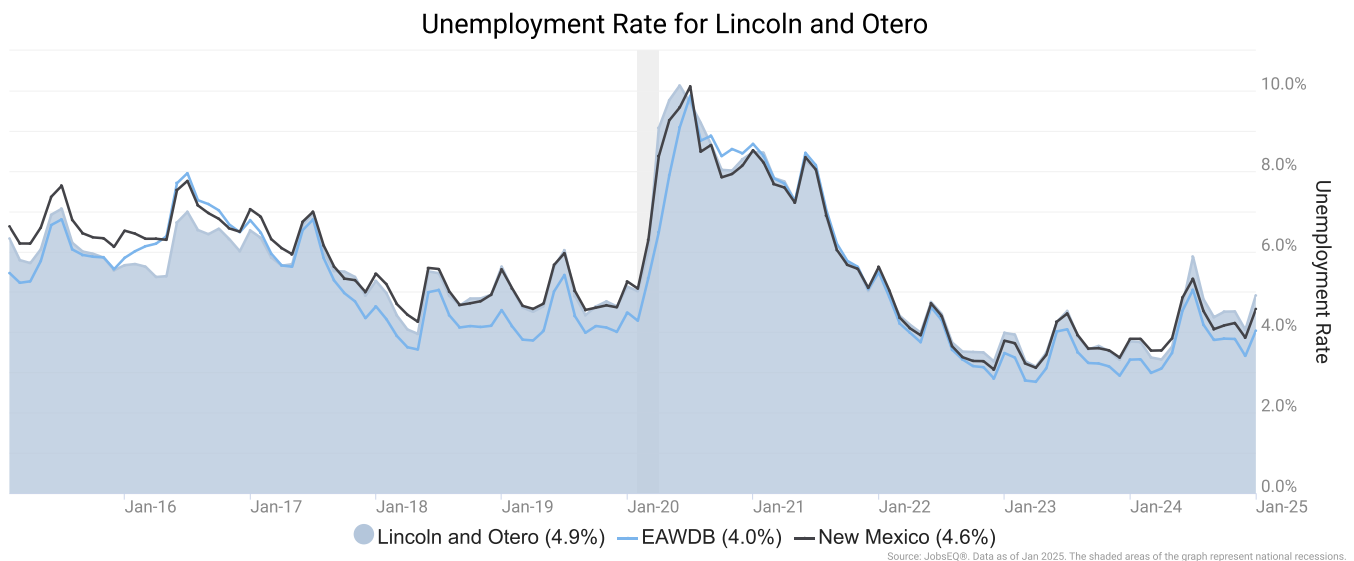
As of 2024Q3, total employment for the Lincoln and Otero was 27,154 (based on a four-quarter moving average). Over the year ending 2024Q3, employment increased 0.4% in the region.



Employment data are derived from the Quarterly Census of Employment and Wages, provided by the Bureau of Labor Statistics and imputed where necessary. Data are updated through 2024Q2 with preliminary estimates updated to 2024Q3.

Unemployment Rate

The unemployment rate for the Lincoln and Otero was 4.9% as of January 2025. The regional unemployment rate was higher than the national rate of 4.4%. One year earlier, in January 2024, the unemployment rate in the Lincoln and Otero was 3.8%.

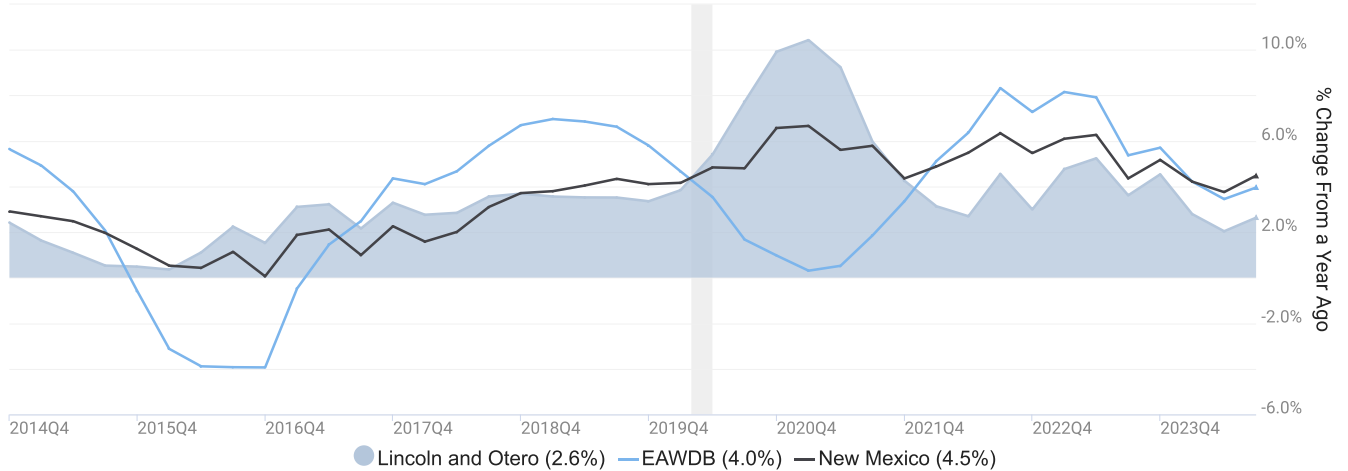


Unemployment rate data are from the Local Area Unemployment Statistics, provided by the Bureau of Labor Statistics and updated through January 2025.

Wage Trends

The average worker in the Lincoln and Otero earned annual wages of \$45,793 as of 2024Q3. Average annual wages per worker increased 2.6% in the region over the preceding four quarters. For comparison purposes, annual average wages were \$72,609 in the nation as of 2024Q3.

Average Annual Wages for Lincoln and Otero



Annual average wages per worker data are derived from the Quarterly Census of Employment and Wages, provided by the Bureau of Labor Statistics and imputed where necessary. Data are updated through 2024Q2 with preliminary estimates updated to 2024Q3.

Cost of Living Index

The Cost of Living Index estimates the relative price levels for consumer goods and services. When applied to wages and salaries, the result is a measure of relative purchasing power. The cost of living is 12.1% lower in Lincoln and Otero than the U.S. average.

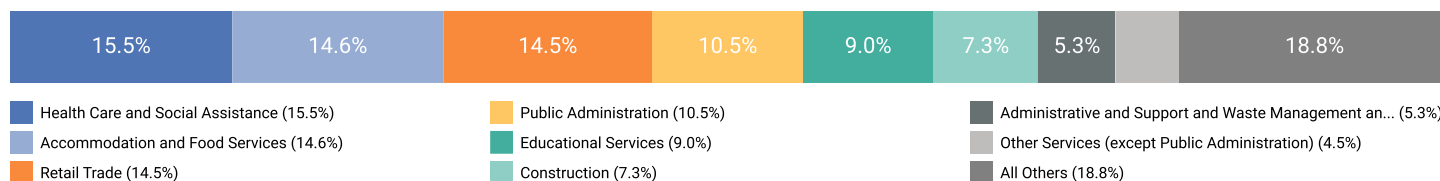
Cost of Living Information			
	Annual Average Salary	Cost of Living Index (Base US)	US Purchasing Power
Lincoln and Otero	\$45,793	87.9	\$52,081
EAWDB	\$57,902	87.8	\$65,954
New Mexico	\$58,633	93.0	\$63,017
USA	\$72,609	100.0	\$72,609

Source: [JobsEQ®](#)
Data as of 2024Q3
Cost of Living per [COLI](#), data as of 2024Q4, imputed by Chmura where necessary.

Industry Snapshot

The largest sector in the Lincoln and Otero is Health Care and Social Assistance, employing 4,196 workers. The next-largest sectors in the region are Accommodation and Food Services (3,967 workers) and Retail Trade (3,936). High location quotients (LQs) indicate sectors in which a region has high concentrations of employment compared to the national average. The sectors with the largest LQs in the region are Public Administration (LQ = 2.25), Utilities (2.02), and Accommodation and Food Services (1.68).

Total Workers for Lincoln and Otero by Industry



Source: JobsEQ®
Data as of 2024Q3
Note: Figures may not sum due to rounding.

Employment data are derived from the Quarterly Census of Employment and Wages, provided by the Bureau of Labor Statistics and imputed where necessary. Data are updated through 2024Q2 with preliminary estimates updated to 2024Q3.

Sectors in the Lincoln and Otero with the highest average wages per worker are Management of Companies and Enterprises (\$74,592), Public Administration (\$70,668), and Professional, Scientific, and Technical Services (\$67,946). Regional sectors with the best job growth (or most moderate job losses) over the last 5 years are Educational Services (+514 jobs), Health Care and Social Assistance (+324), and Retail Trade (+304).

Over the next 5 years, employment in the Lincoln and Otero is projected to expand by 165 jobs. The fastest growing sector in the region is expected to be Health Care and Social Assistance with a +0.9% year-over-year rate of growth. The strongest forecast by number of jobs over this period is expected for Health Care and Social Assistance (+199 jobs), Accommodation and Food Services (+37), and Administrative and Support and Waste Management and Remediation Services (+29).

Lincoln and Otero, 2024Q3¹

NAICS	Industry	Current			5-Year History		5-Year Forecast				
		Empl	Avg Ann Wages	LQ	Empl Change	Ann %	Total Demand	Exits	Transfers	Empl Growth	Ann % Growth
62	Health Care and Social Assistance	4,196	\$54,004	1.03	324	1.6%	2,283	950	1,134	199	0.9%
72	Accommodation and Food Services	3,967	\$28,285	1.68	-615	-2.8%	3,567	1,504	2,027	37	0.2%
44	Retail Trade	3,936	\$31,274	1.48	304	1.6%	2,530	1,111	1,537	-117	-0.6%
92	Public Administration	2,861	\$70,668	2.25	61	0.4%	1,313	524	785	5	0.0%
61	Educational Services	2,451	\$56,836	1.12	514	4.8%	1,102	515	623	-36	-0.3%
23	Construction	1,976	\$45,752	1.22	22	0.2%	873	312	535	26	0.3%
56	Administrative and Support and Waste Management and Remediation Services	1,444	\$45,381	0.87	-52	-0.7%	855	330	496	29	0.4%
81	Other Services (except Public Administration)	1,209	\$27,457	1.05	-14	-0.2%	693	281	406	6	0.1%
54	Professional, Scientific, and Technical Services	929	\$67,946	0.47	95	2.2%	404	140	238	26	0.6%
71	Arts, Entertainment, and Recreation	927	\$33,678	1.66	-46	-1.0%	678	271	409	-2	0.0%
48	Transportation and Warehousing	692	\$55,069	0.51	146	4.9%	382	152	223	6	0.2%
11	Agriculture, Forestry, Fishing and Hunting	523	\$30,172	1.59	-50	-1.8%	303	149	167	-13	-0.5%
52	Finance and Insurance	503	\$55,516	0.47	-87	-3.2%	204	79	127	-2	-0.1%
53	Real Estate and Rental and Leasing	456	\$50,277	0.94	32	1.5%	214	96	121	-3	-0.1%
22	Utilities	285	\$67,338	2.02	4	0.3%	120	46	78	-3	-0.2%
51	Information	277	\$50,167	0.53	-49	-3.2%	114	43	75	-4	-0.3%
31	Manufacturing	275	\$33,392	0.13	-20	-1.4%	139	51	87	1	0.1%
42	Wholesale Trade	115	\$63,769	0.11	-39	-5.7%	57	21	36	0	-0.1%
21	Mining, Quarrying, and Oil and Gas Extraction	90	\$56,633	0.91	-5	-1.0%	44	14	27	2	0.4%
55	Management of Companies and Enterprises	44	\$74,592	0.10	12	6.8%	20	7	12	1	0.4%
Total - All Industries		27,154	\$45,793	1.00	537	0.4%	14,910	6,068	8,678	165	0.1%

Source: [JobsEQ®](#)

Data as of 2024Q3

Note: Figures may not sum due to rounding.

1. All data based upon a four-quarter moving average

Exits and transfers are approximate estimates based upon occupation separation rates.

Employment data are derived from the Quarterly Census of Employment and Wages, provided by the Bureau of Labor Statistics and imputed where necessary. Data are updated through 2024Q2 with preliminary estimates updated to 2024Q3. Forecast employment growth uses national projections adapted for regional growth patterns.

Occupation Snapshot

The largest major occupation group in the Lincoln and Otero is Office and Administrative Support Occupations, employing 3,337 workers. The next-largest occupation groups in the region are Food Preparation and Serving Related Occupations (2,988 workers) and Sales and Related Occupations (2,652). High location quotients (LQs) indicate occupation groups in which a region has high concentrations of employment compared to the national average. The major groups with the largest LQs in the region are Protective Service Occupations (LQ = 1.76), Building and Grounds Cleaning and Maintenance Occupations (1.47), and Food Preparation and Serving Related Occupations (1.34).

Occupation groups in the Lincoln and Otero with the highest average wages per worker are Management Occupations (\$108,900), Healthcare Practitioners and Technical Occupations (\$102,200), and Legal Occupations (\$98,200). The unemployment rate in the region varied among the major groups from 1.4% among Legal Occupations to 7.6% among Farming, Fishing, and Forestry Occupations.

Over the next 5 years, the fastest growing occupation group in the Lincoln and Otero is expected to be Healthcare Support Occupations with a +1.5% year-over-year rate of growth. The strongest forecast by number of jobs over this period is expected for Healthcare Support Occupations (+101 jobs) and Healthcare Practitioners and Technical Occupations (+57). Over the same period, the highest separation demand (occupation demand due to retirements and workers moving from one occupation to another) is expected in Food Preparation and Serving Related Occupations (2,837 jobs) and Sales and Related Occupations (1,840).

Lincoln and Otero, 2024Q3¹

SOC	Occupation	Current						5-Year History		5-Year Forecast				
		Empl	Mean Ann Wages ²	LQ	Unempl	Unempl Rate	Online Job Ads ³	Empl Change	Ann %	Total Demand	Exits	Transfers	Empl Growth	Ann % Growth
43-0000	Office and Administrative Support	3,337	\$42,300	1.05	137	3.4%	125	-89	-0.5%	1,746	805	1,027	-86	-0.5%
35-0000	Food Preparation and Serving Related	2,988	\$32,800	1.34	211	6.0%	129	-183	-1.2%	2,856	1,217	1,620	19	0.1%
41-0000	Sales and Related	2,652	\$40,700	1.12	167	5.5%	191	-11	-0.1%	1,750	817	1,023	-90	-0.7%
11-0000	Management	1,814	\$108,900	0.87	32	1.7%	120	116	1.3%	765	288	455	21	0.2%
25-0000	Educational Instruction and Library	1,768	\$59,900	1.20	50	2.8%	96	332	4.3%	757	354	416	-14	-0.2%
53-0000	Transportation and Material Moving	1,724	\$42,400	0.73	129	5.8%	79	218	2.7%	1,172	458	691	24	0.3%
29-0000	Healthcare Practitioners and Technical	1,712	\$102,200	1.06	25	1.4%	1,072	197	2.5%	530	244	229	57	0.7%
47-0000	Construction and Extraction	1,518	\$51,100	1.25	100	5.3%	18	-32	-0.4%	666	235	403	28	0.4%
37-0000	Building and Grounds Cleaning and Maintenance	1,309	\$36,000	1.47	71	5.0%	55	-111	-1.6%	898	396	491	11	0.2%
31-0000	Healthcare Support	1,263	\$33,900	1.00	54	3.4%	228	96	1.6%	1,002	413	489	101	1.5%
13-0000	Business and Financial Operations	1,262	\$77,300	0.72	37	2.8%	40	74	1.2%	526	178	329	19	0.3%
49-0000	Installation, Maintenance, and Repair	1,231	\$51,800	1.17	45	2.9%	45	25	0.4%	559	221	322	16	0.3%
33-0000	Protective Service	1,031	\$53,100	1.76	41	3.6%	41	-118	-2.1%	533	208	325	0	0.0%
39-0000	Personal Care and Service	786	\$36,100	1.12	52	5.7%	30	-28	-0.7%	713	266	435	13	0.3%
21-0000	Community and Social Service	518	\$60,700	1.03	13	2.8%	77	34	1.4%	256	99	136	21	0.8%
51-0000	Production	512	\$46,800	0.35	30	4.1%	16	-18	-0.7%	273	111	171	-10	-0.4%
27-0000	Arts, Design, Entertainment, Sports, and Media	386	\$57,000	0.78	15	3.9%	42	3	0.1%	192	79	111	2	0.1%

Lincoln and Otero, 2024Q3¹

SOC	Occupation	Current						5-Year History		5-Year Forecast				
		Empl	Mean Ann Wages ²	LQ	Unempl	Unempl Rate	Online Job Ads ³	Empl Change	Ann %	Total Demand	Exits	Transfers	Empl Growth	Ann % Growth
15-0000	Computer and Mathematical	366	\$92,000	0.42	11	2.8%	10	35	2.0%	121	41	67	12	0.7%
17-0000	Architecture and Engineering	355	\$97,200	0.83	8	2.0%	12	-12	-0.7%	127	45	75	8	0.4%
19-0000	Life, Physical, and Social Science	269	\$81,100	1.09	6	2.8%	9	15	1.1%	125	23	98	4	0.3%
23-0000	Legal	189	\$98,200	0.84	3	1.4%	4	-7	-0.7%	53	22	31	0	0.0%
45-0000	Farming, Fishing, and Forestry	164	\$39,000	1.04	14	7.6%	1	1	0.1%	117	49	73	-4	-0.5%
Total - All Occupations		27,154	\$55,300	1.00	1,251	4.0%	2,442	537	0.4%	15,744	6,570	9,014	160	0.1%

Source: [JobsEQ®](#)

Data as of 2024Q3 unless noted otherwise

Note: Figures may not sum due to rounding.

1. Data based on a four-quarter moving average unless noted otherwise.

2. Wage data represent the average for all Covered Employment

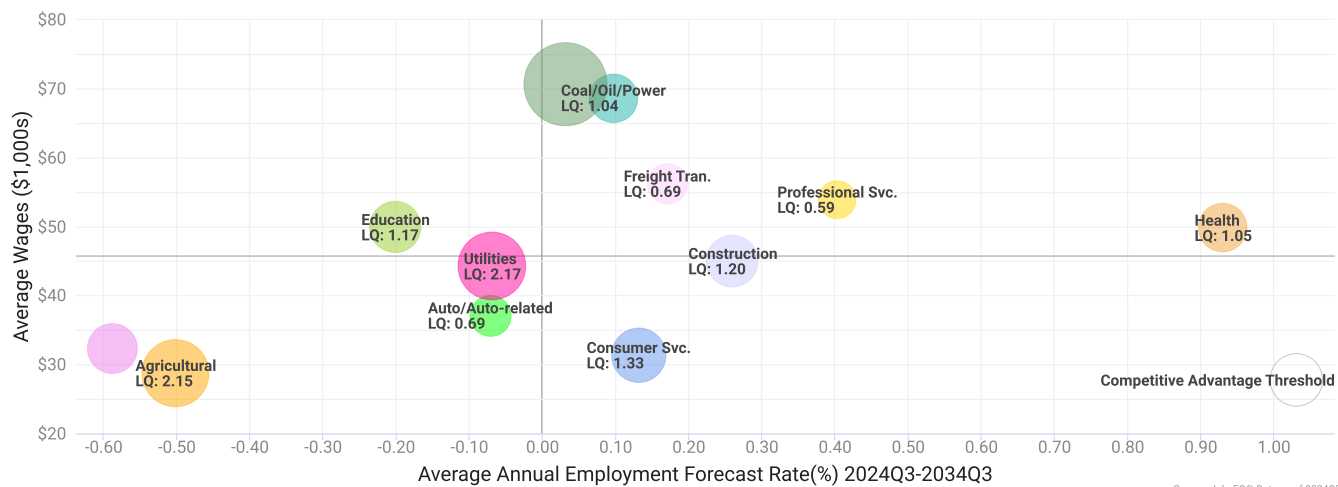
3. Data represent found online ads active within the last thirty days in the selected region. Due to alternative county-assignment algorithms, ad counts in this analytic may not match that shown in RTI (nor in the popup window ad list). Ad counts for ZCTA-based regions are estimates.

Occupation employment data are estimated via industry employment data and the estimated industry/occupation mix. Industry employment data are derived from the Quarterly Census of Employment and Wages, provided by the Bureau of Labor Statistics and currently updated through 2024Q2, imputed where necessary with preliminary estimates updated to 2024Q3. Wages by occupation are as of 2024 provided by the BLS and imputed where necessary. Forecast employment growth uses national projections from the Bureau of Labor Statistics adapted for regional growth patterns.

Industry Clusters

A cluster is a geographic concentration of interrelated industries or occupations. The industry cluster in the Lincoln and Otero with the highest relative concentration is Public Admin. with a location quotient of 3.38. This cluster employs 2,861 workers in the region with an average wage of \$70,662. Employment in the Public Admin. cluster is projected to expand in the region about 0.0% per year over the next ten years.

Industry Clusters for Lincoln and Otero as of 2024Q3

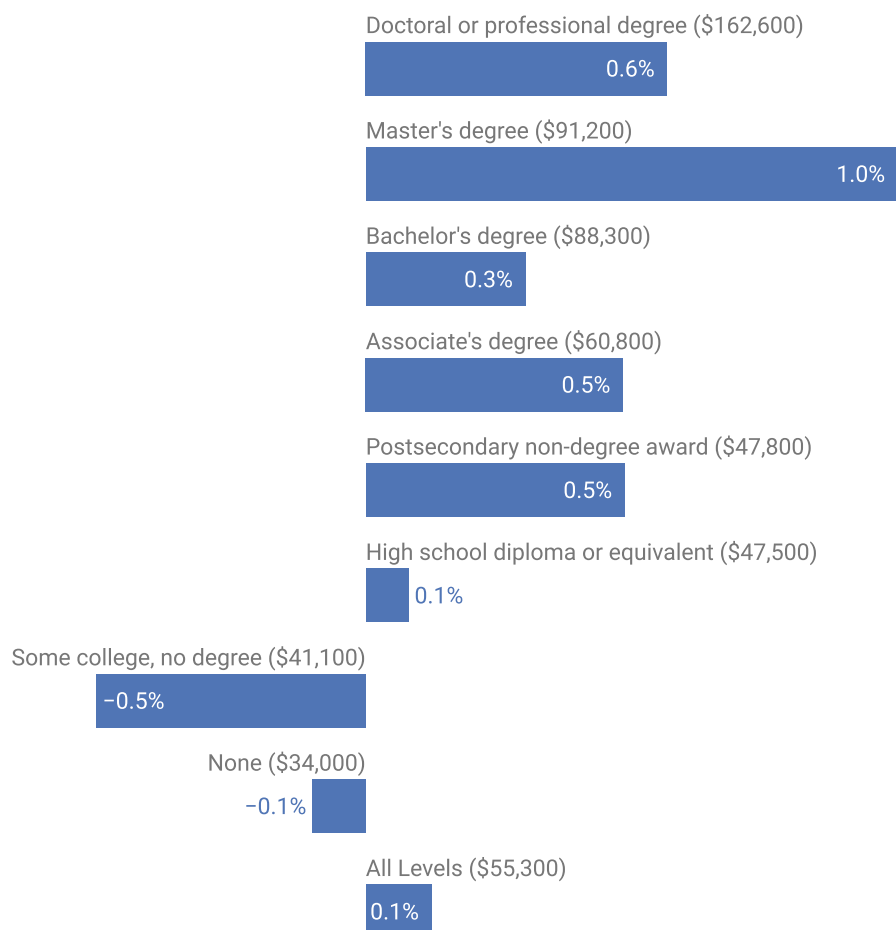


Location quotient and average wage data are derived from the Quarterly Census of Employment and Wages, provided by the Bureau of Labor Statistics, imputed where necessary, and updated through 2024Q2 with preliminary estimates updated to 2024Q3. Forecast employment growth uses national projections from the Bureau of Labor Statistics adapted for regional growth patterns.

Education Levels

Expected growth rates for occupations vary by the education and training required. While all employment in the Lincoln and Otero is projected to grow 0.1% over the next ten years, occupations typically requiring a postgraduate degree are expected to grow 0.6% per year, those requiring a bachelor's degree are forecast to grow 0.3% per year, and occupations typically needing a 2-year degree or certificate are expected to grow 0.5% per year.

Annual Average Projected Job Growth by Education Levels

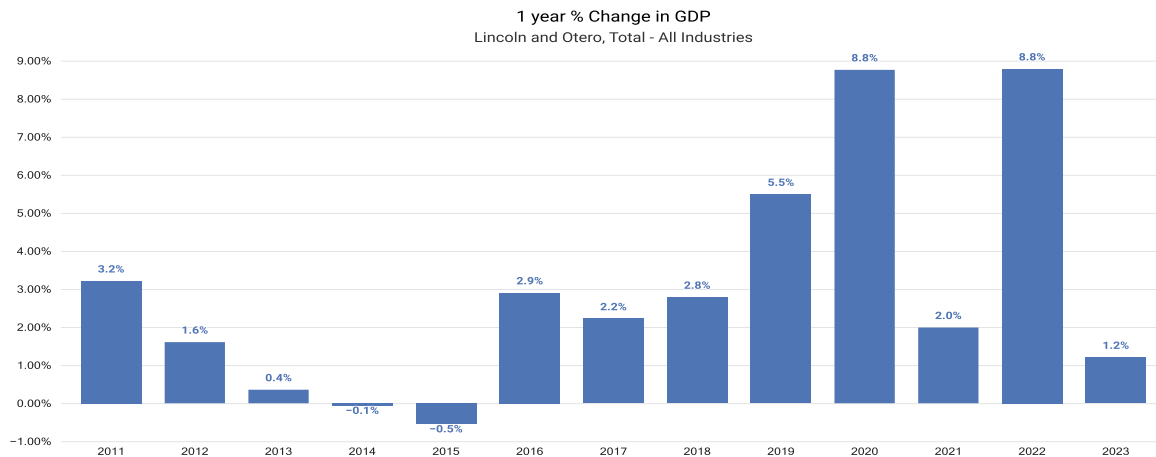


Source: JobsEQ®
Data as of 2024Q3

Employment by occupation data are estimates as of 2024Q3. Education levels of occupations are based on BLS assignments. Forecast employment growth uses national projections from the Bureau of Labor Statistics adapted for regional growth patterns.

Gross Domestic Product

Gross Domestic Product (GDP) is the total value of goods and services produced by a region. In 2023, nominal GDP in the Lincoln and Otero expanded 1.2%. This follows growth of 8.8% in 2022. As of 2023, total GDP in the Lincoln and Otero was \$4,315,846,000.



Gross Domestic Product data are provided by the Bureau of Economic Analysis, imputed by Chmura where necessary, updated through 2023.

Of the sectors in the Lincoln and Otero, Unclassified contributed the largest portion of GDP in 2023, \$1,329,523,000. The next-largest contributions came from Real Estate and Rental and Leasing (\$547,165,000); Public Administration (\$512,338,000); and Health Care and Social Assistance (\$333,273,000).

GDP (in \$ millions)

Lincoln and Otero, 2023

Unclassified (99)

\$1,330

Real Estate and Rental and Leasing (53)

\$547

Public Administration (92)

\$512

Health Care and Social Assistance (62)

\$333

Retail Trade (44)

\$266

Educational Services (61)

\$232

Accommodation and Food Services (72)

\$221

Construction (23)

\$138

Transportation and Warehousing (48)

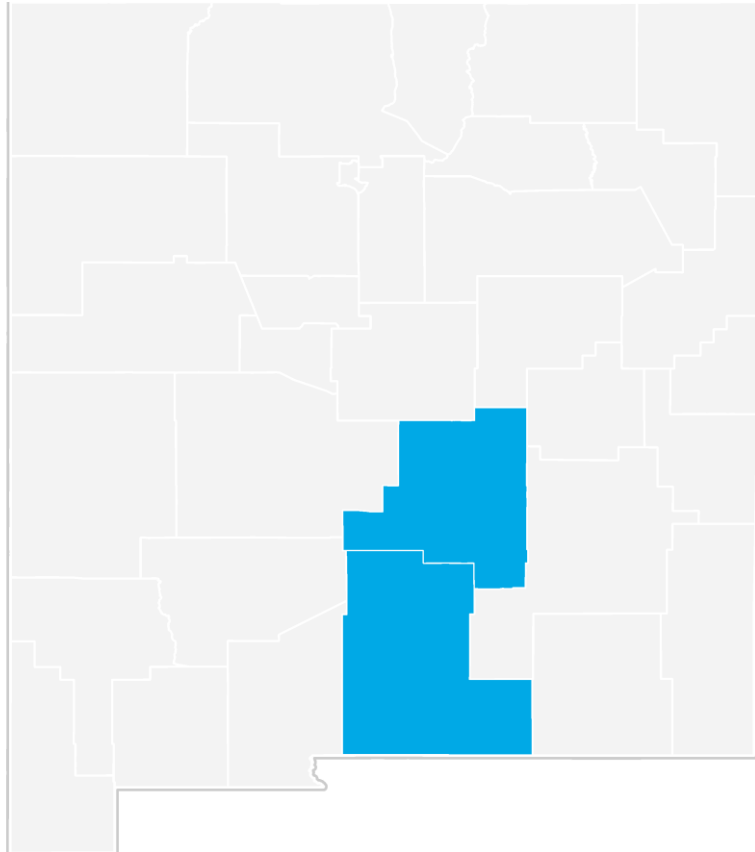
\$107

Administrative and Support and Waste Management and Remediation Services (56)

\$97

Gross Domestic Product data are provided by the Bureau of Economic Analysis, imputed by Chmura where necessary, updated through 2023.

Lincoln and Otero Regional Map



Region Definition

Lincoln and Otero is defined as the following counties:

Lincoln County, New Mexico

Otero County, New Mexico

EAWDB is defined as the following counties:

Chaves County, New Mexico

Lea County, New Mexico

Curry County, New Mexico

Lincoln County, New Mexico

De Baca County, New Mexico

Otero County, New Mexico

Eddy County, New Mexico

Quay County, New Mexico

Guadalupe County, New Mexico

Roosevelt County, New Mexico

Harding County, New Mexico

Union County, New Mexico

FAQ

What is a location quotient?

A location quotient (LQ) is a measurement of concentration in comparison to the nation. An LQ of 1.00 indicates a region has the same concentration of an industry (or occupation) as the nation. An LQ of 2.00 would mean the region has twice the expected employment compared to the nation and an LQ of 0.50 would mean the region has half the expected employment in comparison to the nation.

What is separation demand?

Separation demand is the number of jobs required due to separations—labor force exits (including retirements) and turnover resulting from workers moving from one occupation into another. Note that separation demand does not include all turnover—it does not include when workers stay in the same occupation but switch employers. The total projected demand for an occupation is the sum of the separation demand and the growth demand (which is the increase or decrease of jobs in an occupation expected due to expansion or contraction of the overall number of jobs in that occupation).

What is a cluster?

A cluster is a geographic concentration of interrelated industries or occupations. If a regional cluster has a location quotient of 1.25 or greater, the region is considered to possess a competitive advantage in that cluster.

What is the difference between industry wages and occupation wages?

Industry wages and occupation wages are estimated via separate data sets, often the time periods being reported do not align, and wages are defined slightly differently in the two systems (for example, certain bonuses are included in the industry wages but not the occupation wages). It is therefore common that estimates of the average industry wages and average occupation wages in a region do not match exactly.

What is NAICS?

The North American Industry Classification System (NAICS) is used to classify business establishments according to the type of economic activity. The NAICS Code comprises six levels, from the “all industry” level to the 6-digit level. The first two digits define the top level category, known as the “sector,” which is the level examined in this report.

What is SOC?

The Standard Occupational Classification system (SOC) is used to classify workers into occupational categories. All workers are classified into one of over 804 occupations according to their occupational definition. To facilitate classification, occupations are combined to form 22 major groups, 95 minor groups, and 452 occupation groups. Each occupation group includes detailed occupations requiring similar job duties, skills, education, or experience.

About This Report

This report and all data herein were produced by JobsEQ®, a product of Chmura Economics & Analytics. The information contained herein was obtained from sources we believe to be reliable. However, we cannot guarantee its accuracy and completeness.